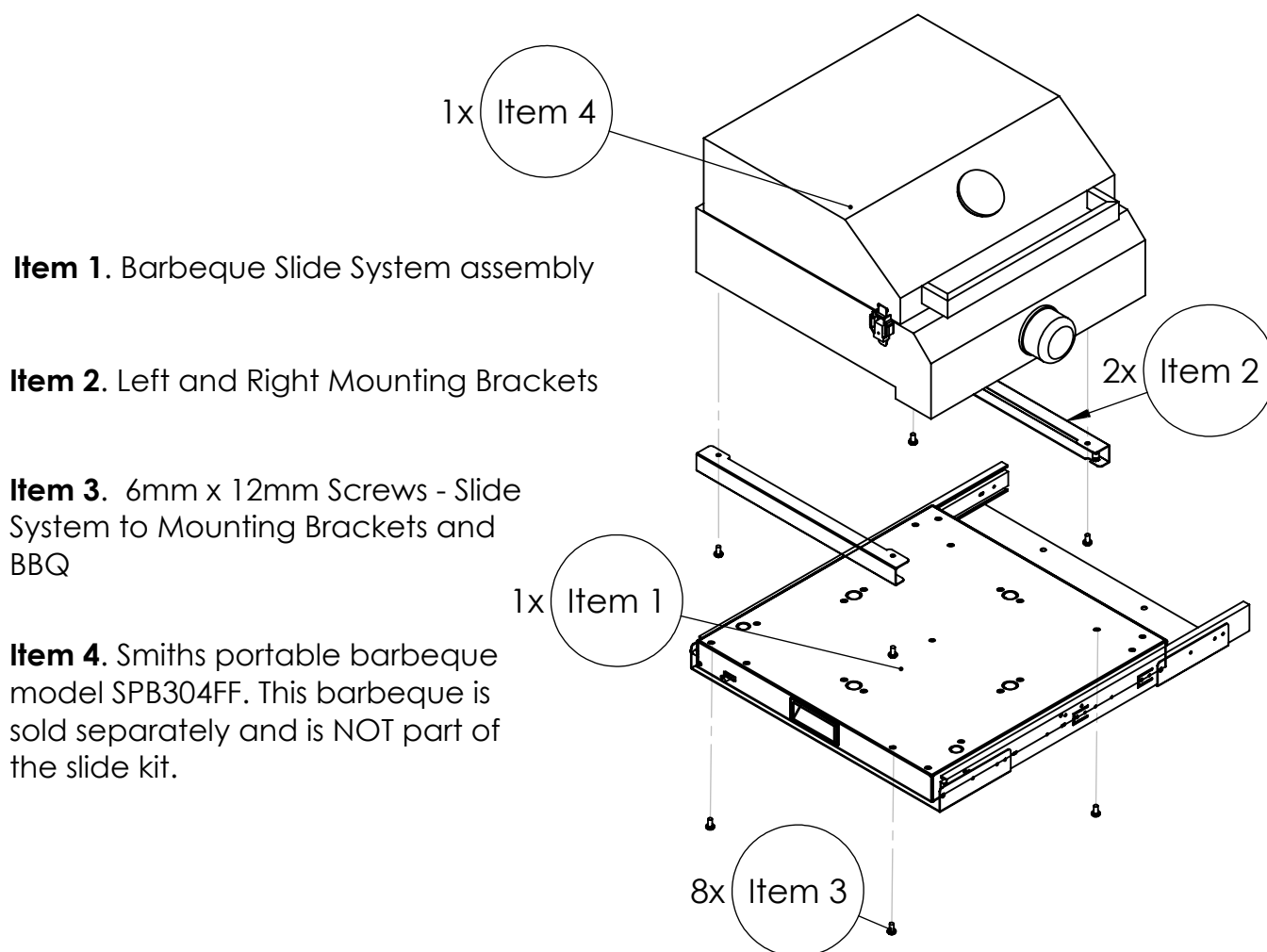


SMITHS BARBEQUE SLIDE SYSTEM

MODEL NO. SBBQS500 (500mm) & MODEL NO. SBBQS600 (600mm)
To Suit SMITHS PORTABLE BARBEQUE MODEL SPB304FF

PART IDENTIFICATION SHEET



NOTE, THE 8MM BOLTS, NUTS AND WASHERS (MINIMUM 4 TO BE USED) ARE NOT SUPPLIED AND TO BE SUPPLIED BY THE INSTALLER. THESE ARE USED TO SECURE THE SLIDE SYSTEM TO THE CARAVAN, RV OR CAMPER TRAILER. THESE MAY BE DIFFERENT DEPENDING ON THE MAKE AND MODEL OF THE CARAVAN, RV OR CAMPER TRAILER.

CAUTION

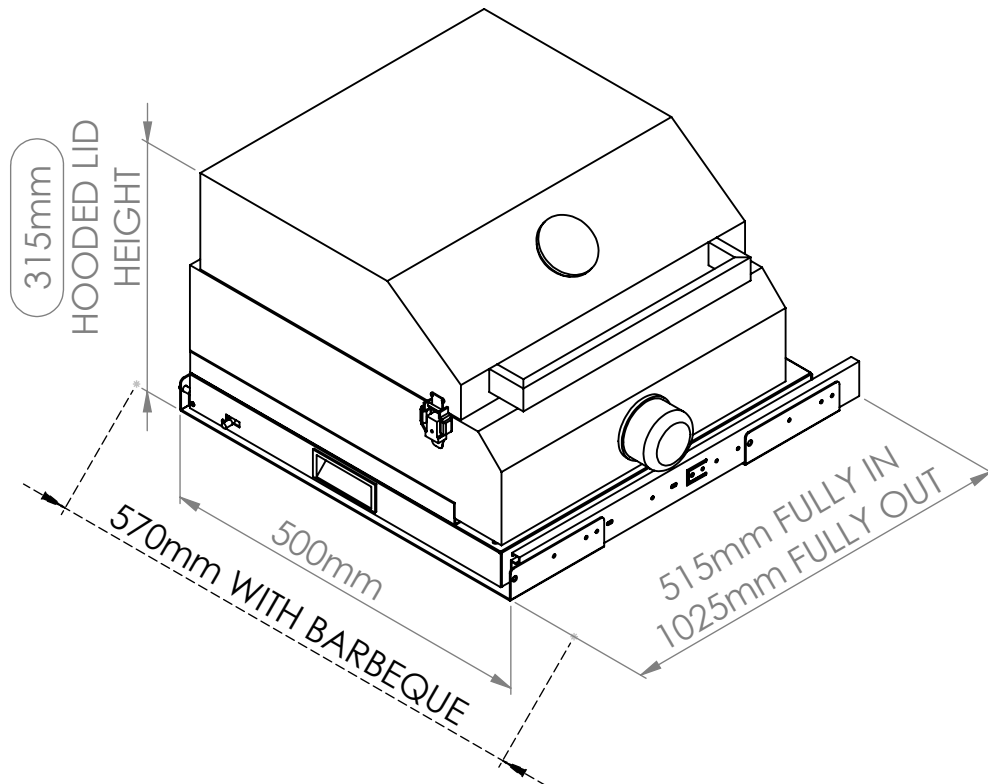
1. Read and Follow all of the instructions completely.
2. The Smiths Barbeque Slide System must be installed in accordance with the full set of instructions listed and meet the regulations laid down by the Caravan and RV industry requirements of state and local government authorities.
3. For safe use of the Smiths Barbeque, DO NOT modify or alter any part of this slide system.

SMITHS BARBEQUE SLIDE SYSTEM

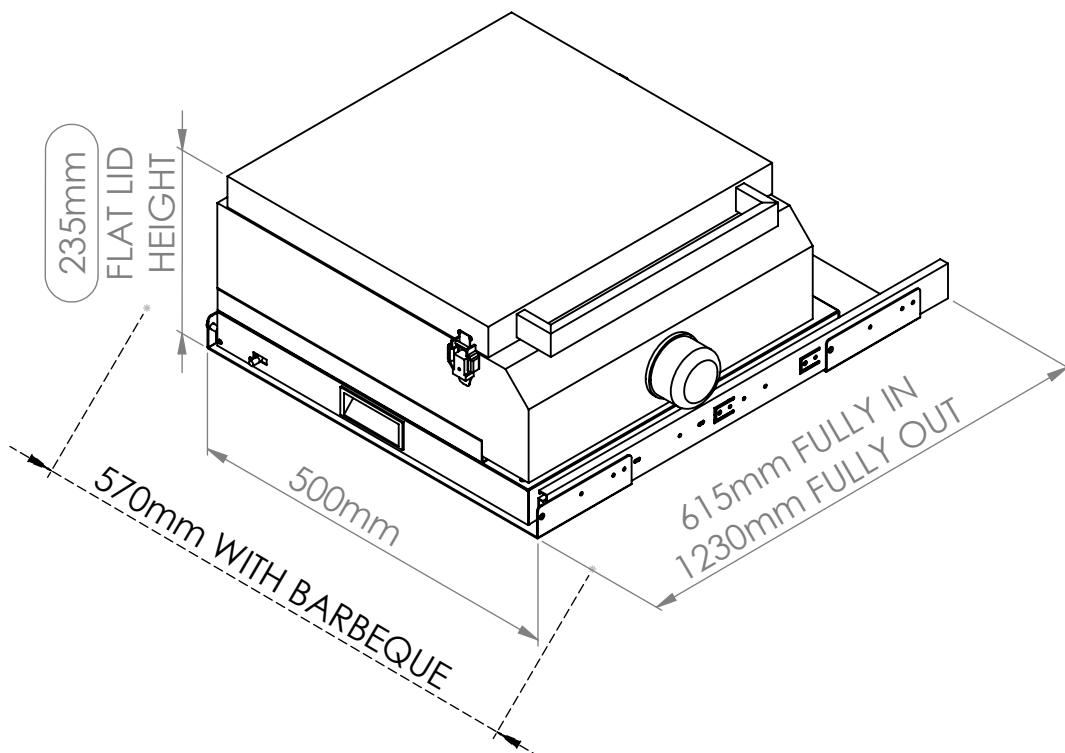
MODEL NO. SBBQS500 (500mm) & MODEL NO. SBBQS600 (600mm)
To Suit SMITHS PORTABLE BARBEQUE MODEL SPB304FF

DIMENSIONS

SBBQS500 HOOD



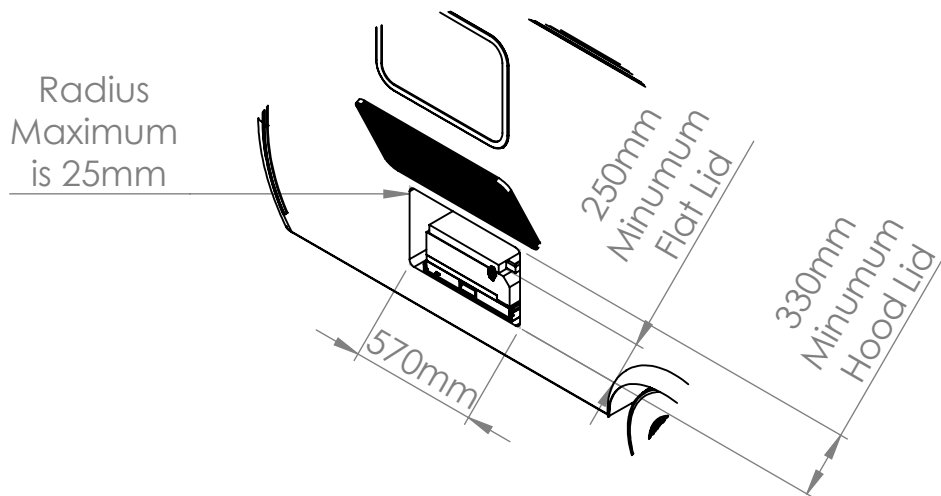
SBBQS600 FLAT LID



INSTALLATION PROCEDURE

STEP 1

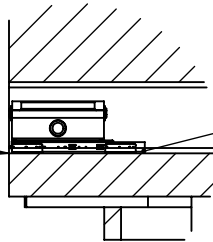
Check the Tunnel Boot opening sizes to ensure the Smiths Barbeque and Smiths Slide System will fit.



STEP 2

The Smiths Slide System is designed to be installed flush with the bottom of the tunnel boot opening. If the floor is lower than this opening, packing such as melamine/mdf/ply will be required to be placed between the floor and the slide system to raise the slide system to the correct height.

Make sure the slide system bottom is flush with the tunnel boot opening bottom horizontal edge



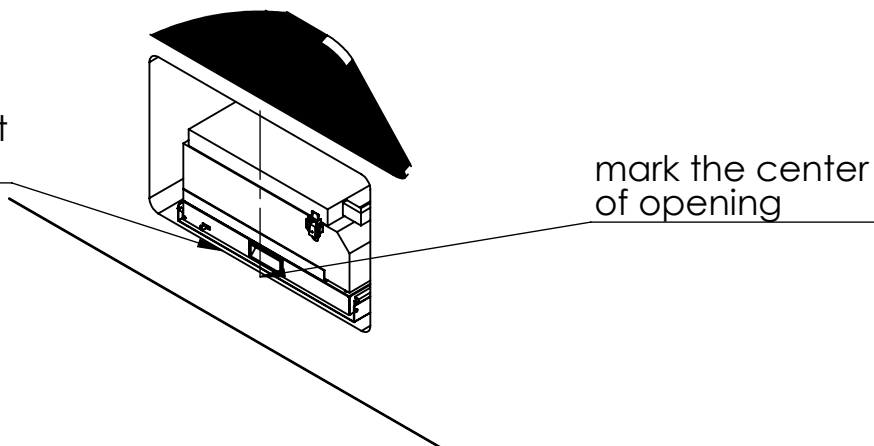
Packing may be required so slide system can protrude past boot door / opening

The slide system must be mounted only on kerb side of the caravan.

STEP 3

Measure in 10mm and mark. Position the slide system in place and align the front with the mark. The slide system needs to be in 10mm so the barbeque spring clip lever does not hit the tunnel boot door when closed. Also position the slide system so it is centred. Ensure the slide system is in place and the arrows in the brackets face towards the tunnel boot door.

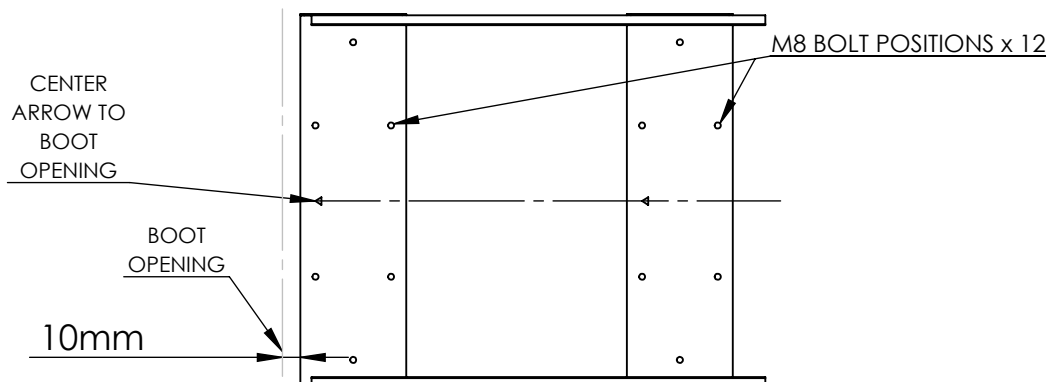
measure and mark 10mm in from edge of boot opening



INSTALLATION PROCEDURE

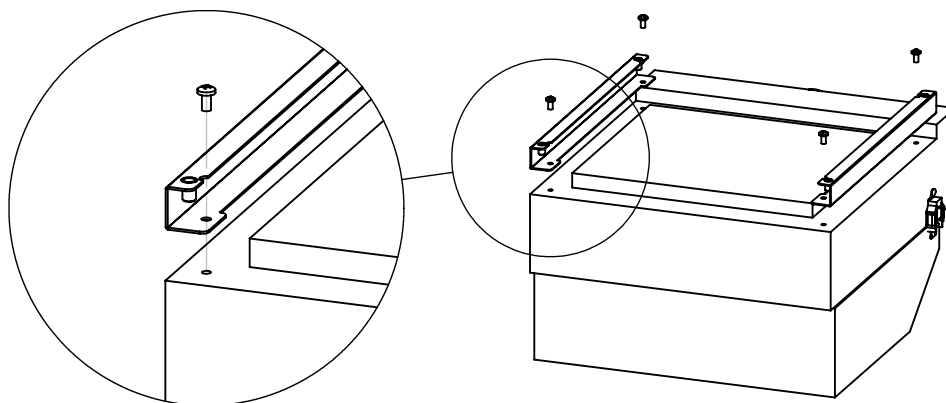
STEP 4

Mark four holes minimum. Two at the rear and two at the front and on opposite sides. Remove the slide system to drill minimum four holes through the tunnel boot floor. Position the slide system back into place and align all holes. Bolt the slide system into place and use low head 8mm bolts. Use large washers and either Nyloc nuts, Locking Nuts and loctite. The washers and nuts must be on the bottom side - under the tunnel boot floor.



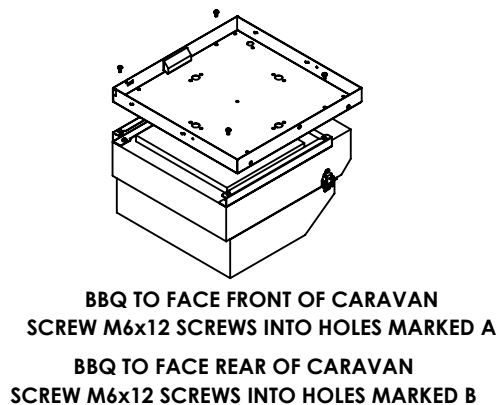
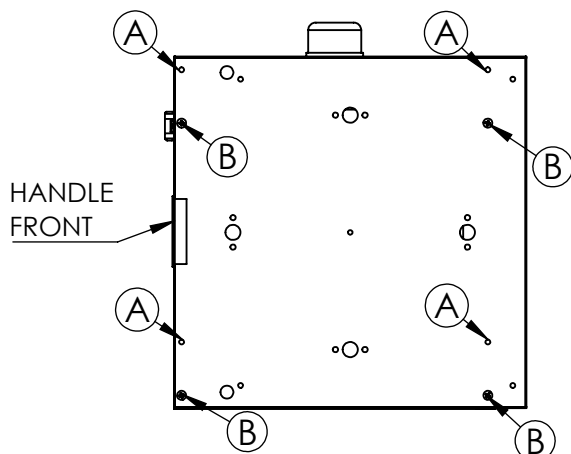
STEP 5

Place the barbeque upside down onto carpet, towel or something that will not mark and damage the stainless steel hood. Screw the two mounting brackets to each side of the barbeque using four M6x12 Screws provided.



STEP 6

Unclip the bbq slide system and pull it out to it's fullest extension. Position the barbeque onto the slide system so that the barbeque sides are parallel with the caravan side. You must not fit the barbeque so the front of the barbeque is parallel to the caravan side as the hood will hit on the caravan side. If you want to mount the barbeque so the front is parallel with the caravan side, you must install the Smiths Slide System SBBQS800 - 800mm model. Align the slide system tray holes with the Barbeque mounting brackets. Do this from underneath the slide system. Use the four M6x12 screws provided and screw together. We recommend to use loctite.



The gas connection must be carried out by an authorised and licensed gas fitter and the installation must meet the the Australian and New Zealand Standards AS/NZS5601 and AS/NZS5263. See Smiths Barbeque user manual and install instruction.